

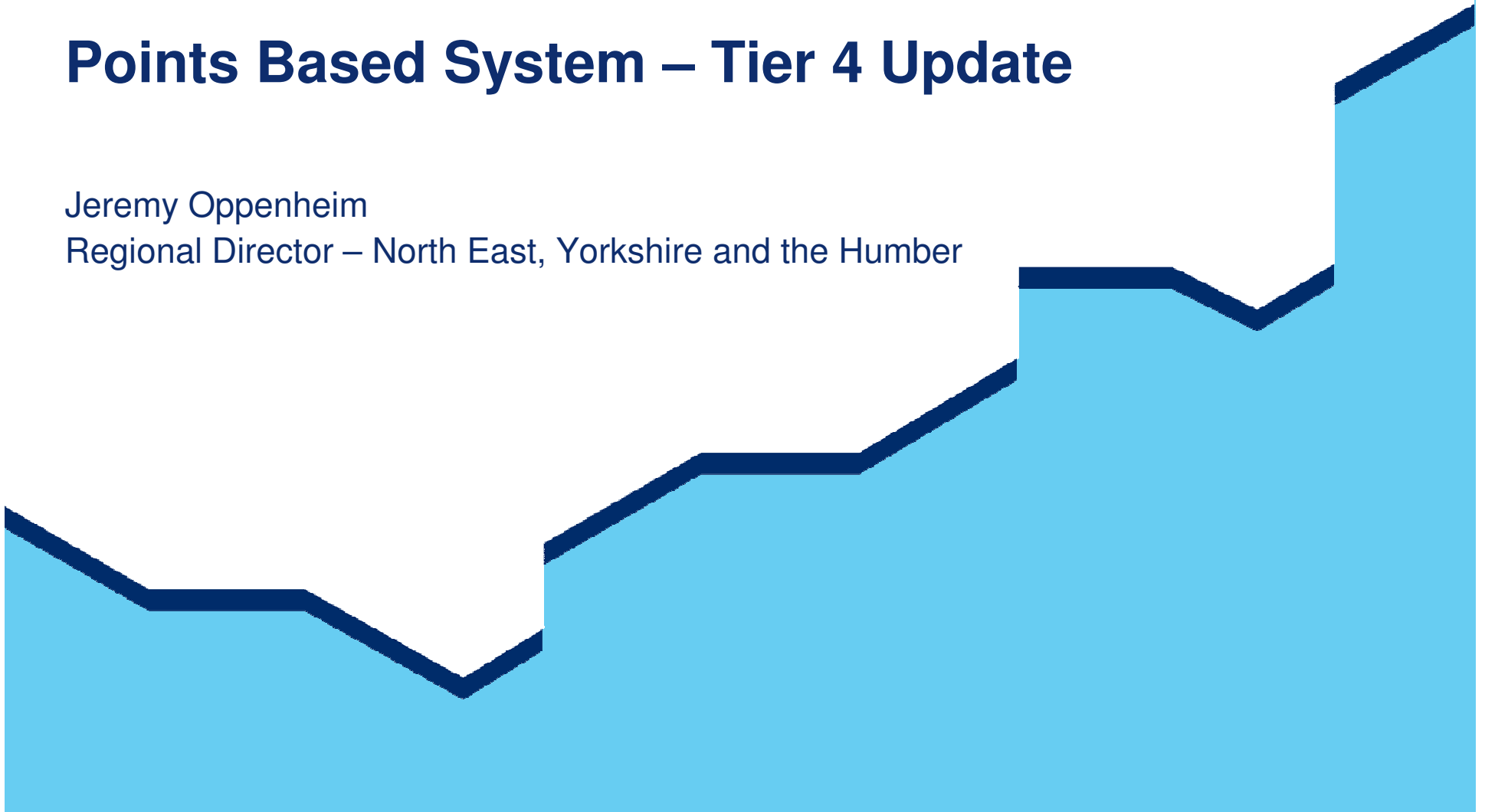


SECURING  
OUR BORDER  
CONTROLLING  
MIGRATION

# Points Based System – Tier 4 Update

Jeremy Oppenheim

Regional Director – North East, Yorkshire and the Humber



## Context

There continues to be a need to **reduce net migration**. Although the student route does not lead directly to settlement, it does counts towards net migration.

We have identified evidence of abuse with **particular segments of the education sector**. We must tackle this.

We received a **strong and broad range of views following consultation**. We have listened to these views and acted accordingly.

**The Government has listened** to the views of people and changed policies as a result.

# English Language Context

There will be a **IELTS 5.5 Average** for English Language tests.

**Visit Visa extension** for English Language students. Allowing English language study for 11 months.

**Colleges will be able to continue to offer Pathway** courses through a number of business models.

## Interim Limit and Sponsor Accreditation

By the end of 2012 **all sponsors** will need to have been vetted by the relevant approved inspectorate and all must become Highly Trusted Sponsors by April 2012.

**There will be a transitional period for current sponsors to meet these requirements.** Existing sponsors who do not meet the new requirements will be limited in the number of new students they may sponsor during this period.

**Partner providers can continue to deliver courses on behalf of sponsors, including 'Pathway' courses.** This will be on the condition that the licensed sponsor takes full responsibility for that student by sponsoring them.

## What next?

### **From April 2011:**

We have tightened the English Language requirements for students;  
All providers who are not HTS and/or not inspected by one of the of the existing public review bodies are now subject to an interim limit on the number of students they can sponsor.

### **From Summer 2011:**

We will tighten the entitlements for students to work and bring dependents;  
We will require students to show genuine progression if they want to undertake further study; and  
We will also tighten our maintenance requirements, but also introduce a streamlined process for low risk students.

### **From April 2012:**

We will require all sponsors to have achieved Highly Trusted Sponsor status;  
We will also tighten rules on work placements;  
We will bring in limits on the time students can spend in Tier 4; and  
We will also close the Tier 1 Post Study Work route.

### **From the end of 2012:**

All sponsors must have been inspected by one of the of the existing public review bodies.